



HYDROX SCALE REMOVER

- Removes Scale, Heavy Slime and Algae from Cooling Towers, Pipes and Condensers
- Reduces Head Pressure
- Increases System Capacity
- Reduces Power Consumption
- Labor Saving

DANGER: CORROSIVE. CAUSES SEVERE SKIN BURNS AND EYE DAMAGE. FOR PROFESSIONAL USE ONLY. KEEP OUT OF REACH OF CHILDREN. SEE SIDE PANELS FOR ADDITIONAL PRECAUTIONS.

H-601, H-605

H-601, H-605

DANGER: May be corrosive to metals. Causes severe skin burns and eye damage. Harmful if swallowed.



Keep in original container. Do not breathe mist, vapors, or spray. Wash face, hands, and any exposed skin thoroughly after handling. Wear protective gloves, protective clothing, and eye/face protection.

FIRST AID: IF SWALLOWED: Rinse mouth. Do not induce vomiting. IF ON SKIN (or hair): Take off immediately all contaminated clothing. Rinse skin with water/shower. Wash contaminated clothing before reuse. IF INHALED: Remove person to fresh air and keep comfortable for breathing. IF IN EYES: Rinse cautiously with water for several minutes. Remove contact lenses, if present and easy to do. Continue rinsing. Immediately call a POISON CENTER/doctor.

Store locked up. Dispose of contents and container in accordance with all local, regional, and national regulations.

Contains [CAS]: Phosphoric Acid [7664-38-2].



Made in U.S.A.
HYDRO-BALANCE CORP.
519 Huffines Blvd., Lewisville, TX U.S.A.
(800) 527-5166 (972) 394-9422
www.HydroBalance.com

LOW FOAMING

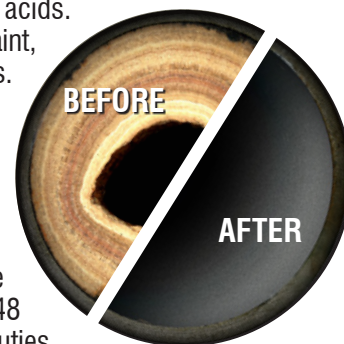
HIGHLY CONCENTRATED

HYDROX SCALE REMOVER

HYDROX is an inhibited phosphoric acid descaler which is much safer, and easier to use than other descalers containing hydrochloric or sulfamic acids. HYDROX is non-fuming, safe on paint, wood and commonly used metals. Do not use on galvanized surfaces.

DIRECTIONS FOR USE: Add HYDROX to the sump and it will reduce head-pressure in a matter of a few hours. Because HYDROX contains no harsh acids, it can be left in the water system for 24 to 48 hours, allowing time for other duties while the system is being cleaned. Add 3 gallons of HYDROX for each 100 gallons of circulating water. The amount of water in the system can be estimated by multiplying the sump length X width X depth in feet and multiplying by 10. Allow system to operate normally for 24 to 48 hours with the bleed line turned off, then drain the entire system.

For systems that cannot be drained after HYDROX treatment, increase the bleed off rate 2 or 3 times normal rate to dilute unused HYDROX.



Similar products on
HydroBalance.com

